



### MR-Series Features

Balanced Charge Agglomeration (BCA<sup>®</sup>) Technology

Contaminant removal to the sub-micron level

Prevention and removal of sludge and varnish

Removal of oxide insolubles and biological contamination

Removal of ferrous and non-ferrous contamination

Efficient and highly effective water removal with coalescer option

Highest flow rates in the industry

Extends the life of antioxidant additives by removing products of oxidation

### Treatable Fluids

Lubricating oil

Hydraulic oil

Phosphate ester

Machining oil

Diesel fuel

Vegetable oil

EDM fluid

Dielectric fluids

Turbine oil

Many other non-conducting fluids

## ISOPur MR-Series Fluid Purification

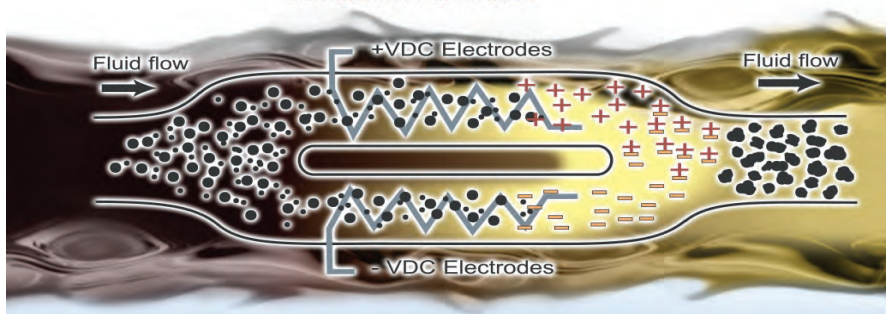
The ISOPur MR Series is the smart purification solutions for flow rates in the 150 to 600 GPH (570-2300 LPH) range. The MR Series contains ISOPur's patented Balanced Charge Agglomeration (BCA<sup>®</sup>) technology, which maintains hydraulic and lubricating fluids in pristine condition by preventing and removing the buildup of sludge and varnish. BCA<sup>®</sup> is paired with the intelligence of SmartPak<sup>™</sup>, which automatically senses fluid condition and adjusts flow accordingly.



### BCA Benefits

- Removal of pre-existing varnish
- Sub-micron particle removal
- Functional with water present
- Enhances current filtration
- Highest flow rates in the industry
- Quicker oil and system clean-up
- Reduced maintenance & repair costs
- Extended equipment life

### BCA<sup>™</sup> Process Sub-micron Purification



1. Fluid enters the ISOPur Charging and Mixing Unit (CMU) and the flow is split into two paths.

2. Particles in the two paths are electrostatically charged positive and negative by electrodes.

3. The oppositely charged particles attract and agglomerate to form large particles that are sent to the filtering system for removal



## ISOPur MR Series Specifications

### SmartPak™ Features



MR-Series PLC Display

### SmartFlow

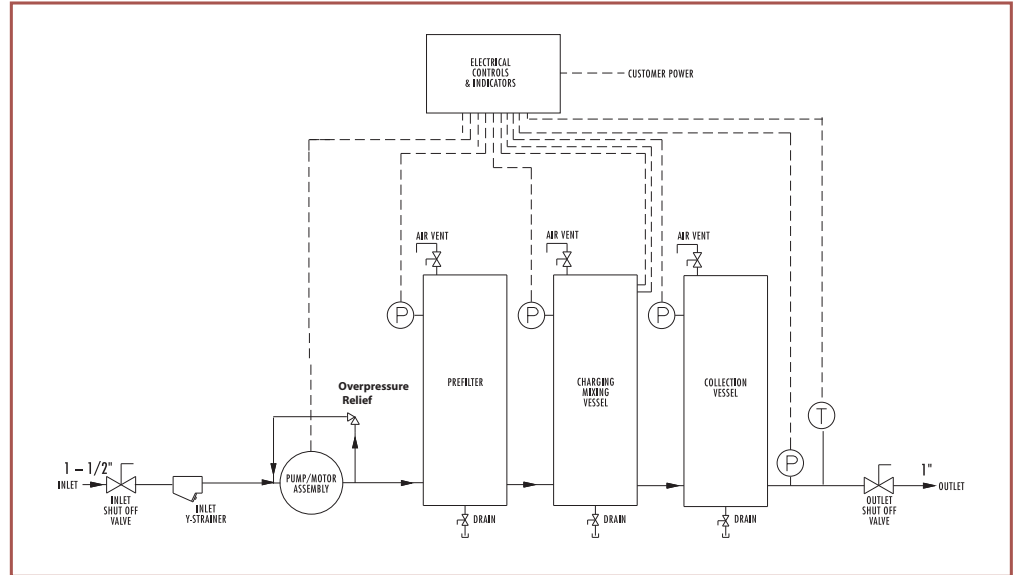
Measures Temperature,  
Pressure, and Flow  
Optimizes Flow Rate

### FilterMinder

Filter Change Auto Reminder  
Unusual Flow/Pressure Alarms

### SmartView

Display Real-Time Conditions  
Easy Custom Programming



### Phosphate Ester Standard

#### Options:

- Simplified Version**
  - No PLC
  - Two Speed Operation
  - Mechanical Gauge
  - Variable Frequency Drive
- Basic Version**
  - Motor Starter
- Explosion Proof:**
  - NEMA 7, NFPA, ATEX
- Casters**

	USA	International
<b>Flow Rate</b>	150 to 600 GPH	600 to 2272 LPH
<b>Dimensions (H x W x D)</b>	56in x 35in x 21in	142cm x 90cm x 53 cm
<b>Servicing Area (H x W x D)</b>	72in x 42in x 30in	183cm x 107cm x 76 cm
<b>Filter Change Area</b>	24in above vessels	61cm
<b>Weight Dry</b>	366 lbs	166 kg
<b>Weight Wet</b>	414 lbs	188 kg
<b>Pump Discharge Pressure</b>	2 to 80 psig	0.14 to 5.5 Bar
<b>Fluid Temperature Range</b>	65 to 200 deg F	18 to 93 deg C
<b>Minimum Flash Point</b>	140 deg F	60 deg C
<b>Pump Type</b>	Positive Displacement Gear Pump	
<b>Motor</b>	TEFC, EPFC, ATEX	
	600 to 1900 RPM	
	1 HP	0.75 Kw
<b>Mains Supply (Volts/Hz)</b>	115 - 460/60	220 - 400/50
	Amps	
<b>Fluid Viscosity*</b>	Dedicated 15 Amp Branch Service	
	2 to 220cSt at 40 deg C	
<b>Ambient Humidity Range</b>	Up to 95% Non-condensing	
<b>Pre-filter Cartridge</b>	ISOPur Custom	
<b>Collection Filter Cartridge</b>	ISOPur Custom	
<b>Storage Ambient</b>	0 to 132 deg F	-18 to 55 deg C
<b>Suction Connection</b>	1.5 in NPT	1.5 in NPT
<b>Discharge Connection</b>	1.0 in NPT	1.0 in NPT

\* Contact an ISOPur representative for operation outside of recommended ranges. ISOPur reserves the right to change specifications without notice.