



HR Series Features

Balanced Charge Agglomeration (BCA®) Technology

Contaminant removal to the sub-micron level

Prevention and removal of sludge and varnish

Removal of oxide insolubles and biological contamination

Removal of ferrous and non-ferrous contamination

Efficient and highly effective water removal with coalescer option

Highest flow rate in the industry

Extends the life of antioxidant additives by removal of products of oxidation

Treatable Fluids

Lubricating oil

Hydraulic oil

Phosphate ester

Machining oil

Diesel fuel

Vegetable oil

EDM fluid

Dielectric fluids

Turbine oil

Many other non-conducting fluids

ISOPur HR Series Fluid Purification

The ISOPur HR Series is the smart purification solutions for flow rates in the 300 to 1200 GPH (1140-4540 LPH) Range. The HR Series contains ISOPur's patented Balanced Charge Agglomeration (BCA®) technology, which maintains hydraulic and lubricating fluids in pristine condition by preventing and removing the buildup of sludge and varnish. BCA® is paired with the intelligence of SmartPak™, which automatically senses fluid condition and adjusts flow accordingly.

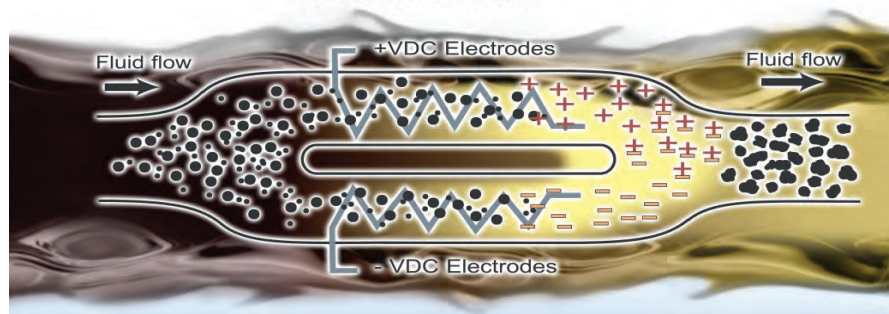


HR Series Oil Purifier

BCA Benefits

- Removal of pre-existing varnish
- Sub-micron particle removal
- Functional with water present
- Enhances current filtration
- Highest flow rates in the industry
- Quicker oil and system clean-up
- Reduced maintenance & repair costs
- Extended equipment life

BCA™ Process Sub-micron Purification



1. Fluid enters the ISOPur Charging and Mixing Unit (CMU) and the flow is split into two paths.

2. Particles in the two paths are electrostatically charged positive and negative by electrodes.

3. The oppositely charged particles attract and agglomerate to form large particles that are sent to the filtering system for removal



SmartPak™ Features



HR Series PLC Display

SmartFlow

Automatic Temperature,
Pressure, and Flow

Optimizes Flow Rate

FilterMinder

Filter Change Auto Reminder
Unusual Flow/Pressure Alarms

SmartView

Display Real-Time Conditions
Easy Custom Programming

Phosphate Ester Standard

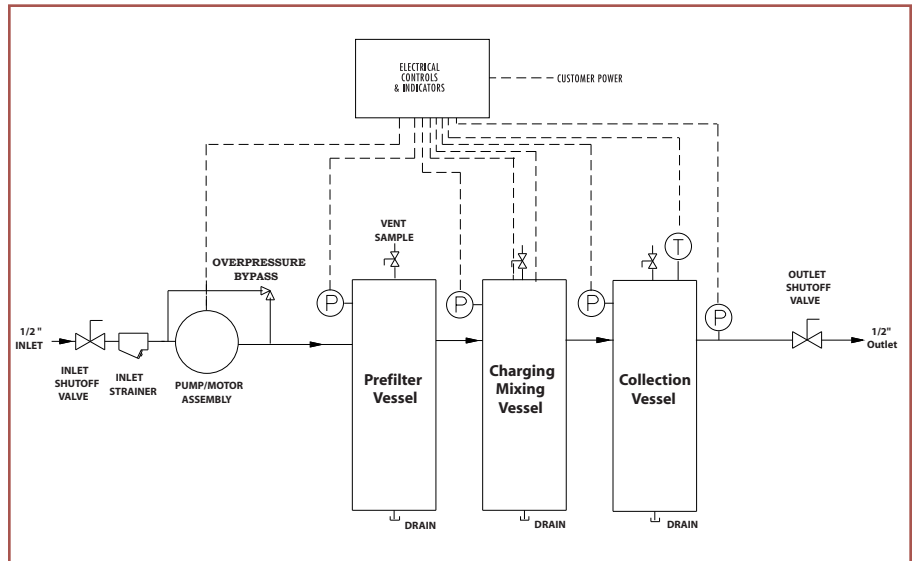
Options:

Explosion Proof:

NEMA 7, NFPA, ATEX

Coalescer Water Removal

ISOPur HR Series Specifications



| | USA | International |
|------------------------------------|---------------------------------|-----------------------|
| Flow Rate | 300 to 1200 GPH | 1140 to 4540 LPH |
| Dimensions (H x W x D) | 59in x 63in x 39in | 150cm x 159cm x 89cm |
| Servicing Area (H x W x D) | 89in x 100in x 75in | 226cm x 254cm x 190cm |
| Filter Change Area | 36 in Above Vessel | 92 cm Above Vessel |
| Weight Dry | 950 lbs | 425 kg |
| Weight Wet | 1190 lbs | 530 kg |
| Pump Discharge Pressure | 2 to 80 psig | 0.14 to 5.5 Bars |
| Fluid Temperature Range | 65 to 200 deg F | 18 to 93 deg C |
| Minimum Flash Point | 140 deg F | 60 deg C |
| Pump Type | Positive Displacement Gear Pump | |
| Motor | TEFC, EPFC, ATEX | |
| RPM | 600 to 1800 RPM | |
| Power | 1.5 HP | 0.375 Kw |
| Mains Supply (Volts/Hz) | 230/460/60 | 220 -240/380/50 |
| Amps | Dedicated 15 Amp Branch Service | |
| Fluid Viscosity* | 2 to 220cSt at 40 deg C | |
| Ambient Humidity Range | Up to 95% Non-condensing | |
| Pre-filter Cartridge | ISOPur Custom | |
| Collection Filter Cartridge | ISOPur Custom | |
| Storage Ambient | 0 to 132 deg F | -18 to 55 deg C |
| Suction Connection | 2.0 in ANSI Flange | 2.0 in ANSI Flange |
| Discharge Connection | 1.5 in ANSI Flange | 1.5 in ANSI Flange |

* Contact an ISOPur representative for operation outside of recommended ranges. ISOPur reserves the right to change specifications without notice.